

EPG Data Analysis 101

- Path Names
- by
- T.A. Ebert
- M.E. Rogers

EPG
Work-
shop





There are two options

- Option 1: Change Explorer settings.
- Option 2: Manually figure out the path and enter using keyboard.

Option 1

Go to View

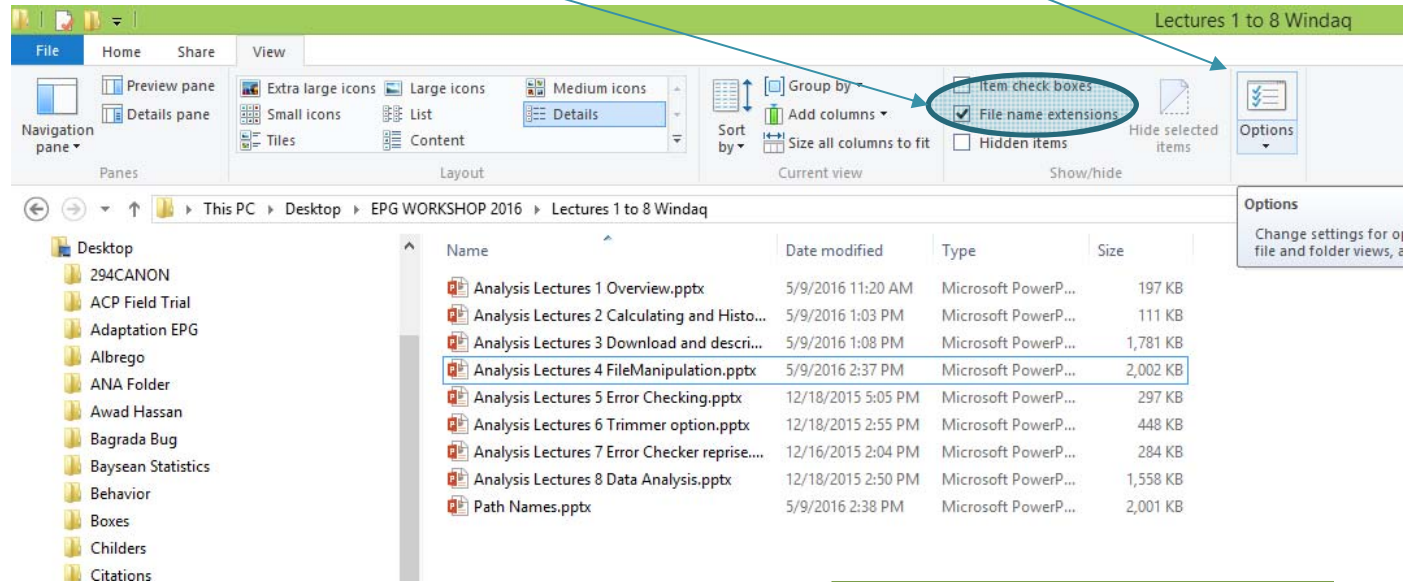
The screenshot shows a Windows File Explorer window with the 'View' tab selected in the ribbon. A blue arrow points from the text 'Go to View' to the 'View' tab. The window title is 'Lectures 1 to 8 Windaq'. The address bar shows the path: 'This PC > Desktop > EPG WORKSHOP 2016 > Lectures 1 to 8 Windaq'. The left sidebar shows a list of folders, and the main pane shows a list of PowerPoint files.

Name	Date modified	Type	Size
Analysis Lectures 1 Overview.pptx	5/9/2016 11:20 AM	Microsoft PowerP...	197 KB
Analysis Lectures 2 Calculating and Histo...	5/9/2016 1:03 PM	Microsoft PowerP...	111 KB
Analysis Lectures 3 Download and descri...	5/9/2016 1:08 PM	Microsoft PowerP...	1,781 KB
Analysis Lectures 4 FileManipulation.pptx	5/9/2016 2:37 PM	Microsoft PowerP...	2,002 KB
Analysis Lectures 5 Error Checking.pptx	12/18/2015 5:05 PM	Microsoft PowerP...	297 KB
Analysis Lectures 6 Trimmer option.pptx	12/18/2015 2:55 PM	Microsoft PowerP...	448 KB
Analysis Lectures 7 Error Checker reprise....	12/16/2015 2:04 PM	Microsoft PowerP...	284 KB
Analysis Lectures 8 Data Analysis.pptx	12/18/2015 2:50 PM	Microsoft PowerP...	1,558 KB
Path Names.pptx	5/9/2016 2:38 PM	Microsoft PowerP...	2,001 KB



Select Options

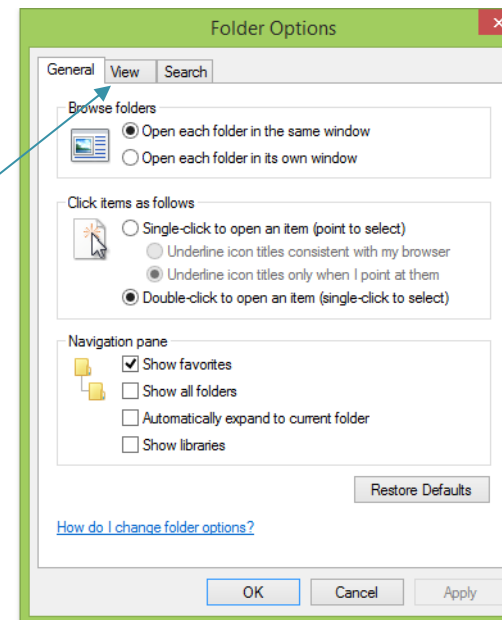
Turn on file name extensions



You should see this pop up



Select View





1

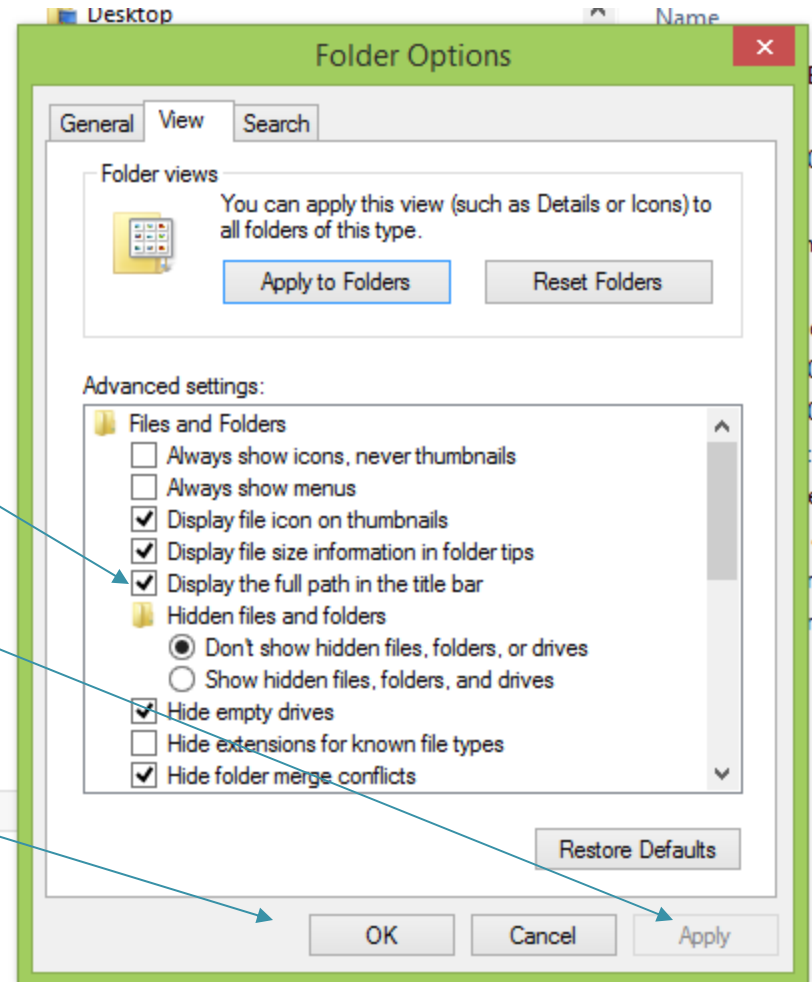
Click here to display full path

2

Apply

3

ok



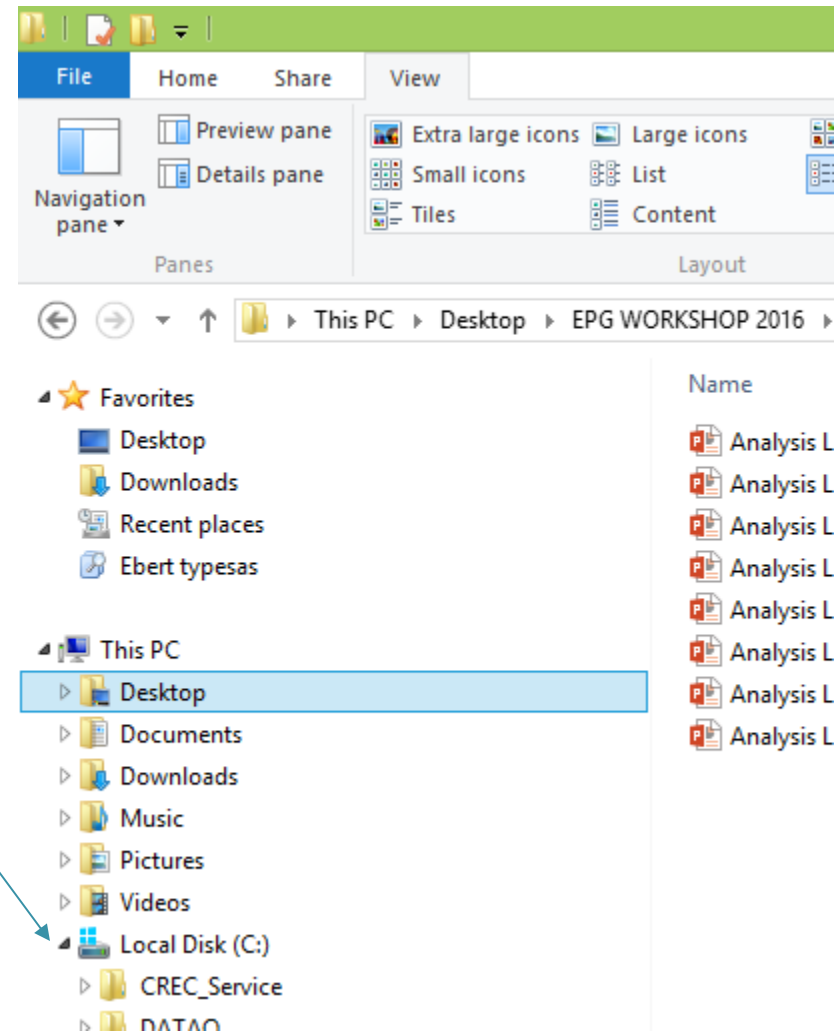
The “Folder Options pop-up should close when you hit Ok.

Option 2: When all else fails

NOTE: This is an example. Read through the example. Use this approach to get the path to your file.

Always start here, even for your file.

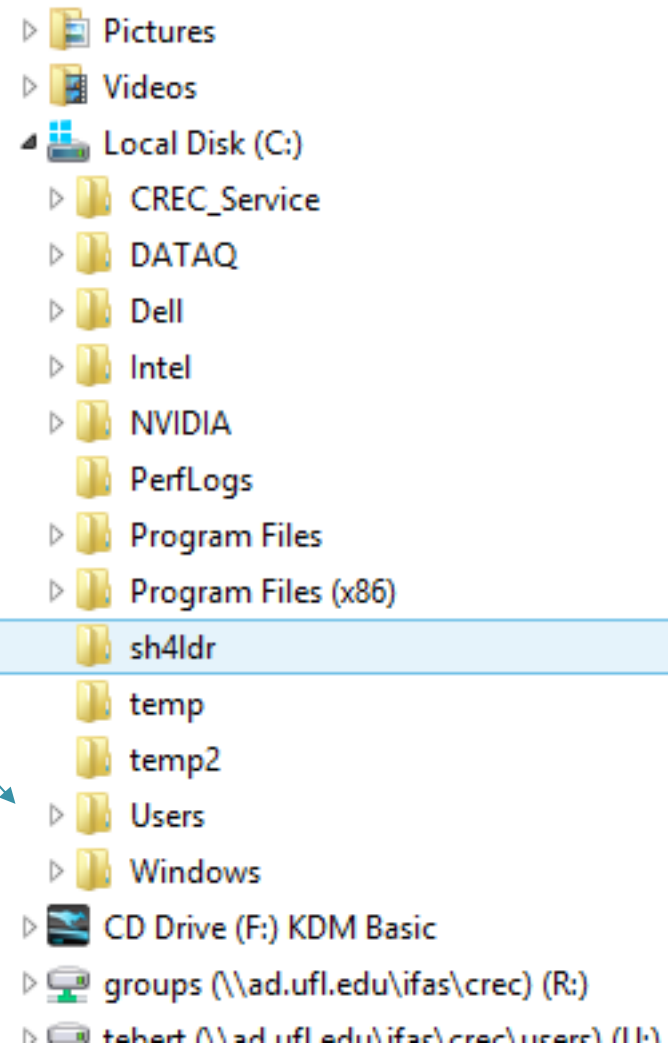
1 Click on "Local Disk (C:)"



This is the start of the path name.
C:/

This part needs to be modified for your system and file location. However, you will follow the folders to your file and build the path just as in this example.

 Next select users



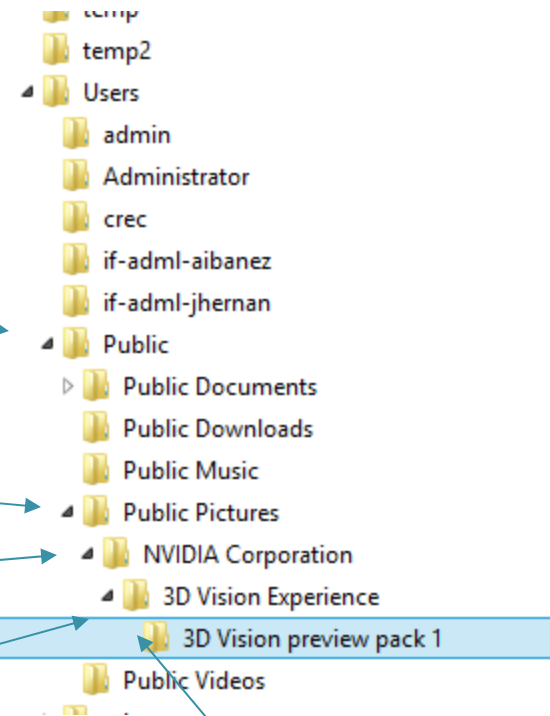
Now the path name is:
C:/Users/

Follow the path and build up

C:/Users/Public/

C:/Users/Public/Public Pictures/

C:/Users/Public/Public Pictures/NVIDIA Corporation/



C:/Users/Public/Public Pictures/NVIDIA Corporation/3D Vision Experience

C:/Users/Public/Public Pictures/NVIDIA Corporation/3D Vision Experience/3D Vision preview pack 1/

You now have to go through this same exercise to find the path to your file. You only do this once.



Caution

- Some systems use \ while others use / to separate folders, and separate the path from the file name.
- SAS is very particular and wants a \
- A program called R is also very particular and wants a /
- If there is a problem with the “file name” please check to see that you have a \ in SAS.